



- ▶ Mounted field sprayers
Sirius 8
Sirius 10



The next generation of the efficient sprayer

A policy of on-going development and continuous improvement means LEMKEN now presents the Sirius mounted sprayer range in the new 8 and 10 series models.

The optimised centre of gravity will reduce tractor lift requirement and increase tractor stability. The reduced height of the machine is a result of re-arranged hoses between tank and boom.

A new suction injector increases suction performance in the chemical inductor easing filling and inclusion of agent. An agitator nozzle, which can be turned on

or off, contributes to an improved mixture of the spray liquid and optimises agitation performance.

The new aluminium boom (SEH) is available in working widths up to 30 m for the Sirius 10. Due to its moulded rectangular profile the boom provides less weight and more stability. The increased internal diameter provides sufficient space for nozzle bodies with five nozzles as well as injector nozzles and protects them from external damage.

The new Sirius 10 features a circulation pipe as standard so that the spraying

agent is immediately available at all nozzles when the sprayer is switched on.

The Sirius 10 is also the first LEMKEN sprayer providing individual electric nozzle valves. They are combined to create partial widths and centrally controlled by the Ecospray computer providing fast response times and highest precision of application

The Sirius 8 with the proven HE boom is available in 12 and 15 metres working width and is operated with the electronic remote control LEMKEN Easyspray.

Sirius 8

- Volume 950, 1,370, 1,680 and 2,000 litres
- HE boom, package folded
- Working widths 12 and 15 metres
- Electronic remote control LEMKEN Easyspray.



Sirius 10

- Volume 950, 1,370, 1,680 and 2,000 litres
- HE boom, package folded and SEH boom, rear folded
- Working widths 12 and 15 metres (HE) and 15 to 30 metres (SEH)
- LEMKEN Ecospray electronic operation with automatic rate control



Frame and tank



Rigid frame structure

Long lifetime guaranteed

- Made from steel profiles with a large diameter
- Completely closed frame
- Powder coating prevents corrosion

Very smooth road holding

- Compact design with optimised centre of gravity
- Can be used with minimum front ballast



QuickConnect coupling system

Convenient and safe coupling and de-coupling

- Allows adequate clearance between tractor and machine
- All connections and services can be connected conveniently and safely

Optimal centre of gravity while working

- Minimum distance between machine and tractor



Top-of-the-range tank

Ideal dimensions

- The tank is 55 cm deep over the complete height

Safe driving guaranteed

- The integrated baffle prevents excessive movement of tank contents

No depositions

- The interior surface of the tank is smooth without shadowed areas



SEH - the new dimension of booms



▶ Profile

Wide shape – best durability

- The new rectangular design provides increased stability for the boom

Protected, but easy to access

- Nozzles, pipes and electronics are well protected in the aluminium profile, but can be easily reached for adjustment and maintenance purposes



▶ Parasol suspension

Best boom position guaranteed

- The automatic parallel adjustment ensures optimum working even on lateral slopes

Highest damping quality

- Horizontal dampers prevent yaw movements
- Vertical dampers prevent rolling movements

Safe folding and width reduction

- Hydraulic pendulum lock as standard



▶ Boom functions

A boom that combines many functions

- Symmetrical folding for all booms
- Assymetrical folding up to 24 metres working width (SEH 24/18)
- Upward angle up to 15°
- The Ecospray computer controls all boom functions



Precise and environmentally sound



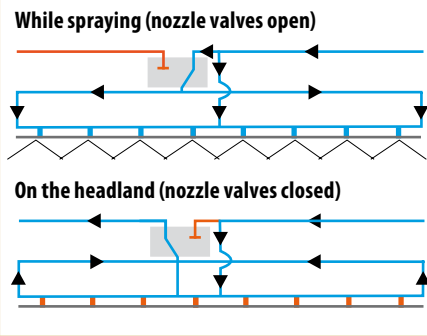
Comfort and Premium operation

Comfort folding providing ease of boom operation by means of joysticks (option)

- Lifting – lowering
- Slope compensation
- Upward angling
- Symmetrical and assymetrical reduction

Additional advantages of Premium folding

- Headland management
- Automatically folding in an out



Circulation pipe

Best application precision as standard

- Nozzle pipe feeding from three sides guarantees a uniform cross distribution
- Simultaneous switching-on and switching-off across the whole working width
- Constant pressure and volume flow for a high precision of application and a uniform spray result
- Deposits within the pipe are avoided



EltecBase boom control

Fast response times and a high flexibility

- Electrical individual nozzle valves are joined to width sections
- Nozzles are switched directly at the nozzle holder
- Triple nozzle holder as standard, quintuple nozzle holders as option



Eased operation



▶ Opreation centre

Ergonomically optimised handling

- Completely covered, providing an always clean control panel
- Pressure and suction area are clearly divided
- Pressure and suction filters are easy to reach

Intergrated chemical inductor

- Adjustable strong suction performance
- Edge dampening without avoiding mist
- Efficient canister rinse

▶ Sirius 8: Easyspray

Reliable remote control

- Switching-on and off the main valve
- Electronic pressure adjustment
- Electronic preselection of hydraulic boom folding functions
- Additional functions: indication of the slope centre position, indication of the pendulum lock, working light, flashing alarm lamp



▶ Sirius 10: Convenient operation with Ecospray

Fully electronic control terminal with speed-dependant adjustment of the application quantity

- Indication of pressure and flow
- Switching from manual to automatic pressure control
- Higher/lower rate control by pressing button

- Remaining amount indicator in hectares or by distance, hectare counter, litre counter, working time counter
- Boom folding by one-hand control with pre-selection
- Level monitor
- Switchboard for with sections as option

▶ GPS with section control Matrix

Automatic width section control (option)

- On-screen track guidance system combined with Ecospray
- Track guidance system when combined with a camera
- Export of work and GPS data via USB interface

Intelligent options



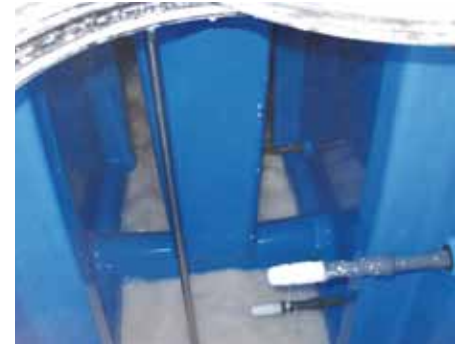
Cleaning gun and agitator nozzle

- Eases dissolving and inducing agents of low solubility



Tank pilot

- Electronic level indication at the operation terminal and the control panel



Intensive agitator

- As an alternative to the back flow agitator nozzles additional injector nozzles can be fed via the distribution valve



Exterior cleaning

- 15 metre hose reel with connection for the spray pump



Drop hoses

- Accurate liquid fertilising with drop hoses avoids chemical burns of the plants



LED boom lighting

- The working area is optimally lighted even with 30 metres boom width



Technical data

| Sirius | 8/900 | 8/1300 | 8/1600 | 8/1900 | 10/900 | 10/1300 | 10/1600 | 10/1900 |
|--------------------------------|-------|--------|--------|--------|--------|---------|---------|---------|
| Tank , nominal volume (litres) | 900 | 1,300 | 1,600 | 1,900 | 900 | 1,300 | 1,600 | 1,900 |
| Tank, actual volume (litres) | 950 | 1,370 | 1,680 | 2,000 | 950 | 1,370 | 1,680 | 2,000 |

| Weight with boom (kg) | | | | | | | | |
|-----------------------|-----|-----|-----|-------|-------|-------|-------|-------|
| HE 12 | 900 | 915 | 980 | 995 | 900 | 915 | 980 | 995 |
| HE 15 | 915 | 930 | 995 | 1,010 | 915 | 930 | 995 | 1,010 |
| SEH 15 | - | - | - | - | 1,240 | 1,255 | 1,320 | 1,335 |
| SEH 18 | - | - | - | - | 1,255 | 1,270 | 1,335 | 1,350 |
| SEH 20 | - | - | - | - | 1,350 | 1,365 | 1,430 | 1,445 |
| SEH 21 | - | - | - | - | 1,355 | 1,370 | 1,435 | 1,450 |
| SEH 24 | - | - | - | - | 1,370 | 1,385 | 1,450 | 1,465 |
| SEH 27 | - | - | - | - | - | - | 1,525 | 1,540 |
| SEH 28 | - | - | - | - | - | - | 1,530 | 1,545 |
| SEH 30 | - | - | - | - | - | - | 1,540 | 1,555 |

| Transport dimensions (m) with boom | Length | Width | Height | | | | | | | | |
|------------------------------------|--------|-------|--------|--------|--------|--------|--------|---------|---------|---------|------|
| | | | 8/900 | 8/1300 | 8/1600 | 8/1900 | 10/900 | 10/1300 | 10/1600 | 10/1900 | |
| HE 12 | 1.79 | 2.95 | 2.80 | 2.80 | 2.80 | 2.80 | 2.80 | 2.80 | 2.80 | 2.80 | 2.80 |
| HE 15 | 1.79 | 2.95 | 2.80 | 2.80 | 2.80 | 2.80 | 2.80 | 2.80 | 2.80 | 2.80 | 2.80 |
| SEH 15/11 | 2.00 | 2.50 | - | - | - | - | - | 2.90 | 2.90 | 2.90 | 2.90 |
| SEH 18/12 | 2.00 | 2.50 | - | - | - | - | - | 3.25 | 3.25 | 3.25 | 3.25 |
| SEH 20/15 | 2.20 | 2.50 | - | - | - | - | - | 3.25 | 3.25 | 3.25 | 3.25 |
| SEH 21/15 | 2.20 | 2.50 | - | - | - | - | - | 3.25 | 3.25 | 3.25 | 3.25 |
| SEH 21/17 | 2.20 | 2.50 | - | - | - | - | - | 2.90 | 2.90 | 2.90 | 2.90 |
| SEH 24/18 | 2.20 | 2.50 | - | - | - | - | - | 3.25 | 3.25 | 3.25 | 3.25 |
| SEH 27/21 | 2.40 | 2.50 | - | - | - | - | - | - | - | 3.25 | 3.25 |
| SEH 27/22 | 2.40 | 2.50 | - | - | - | - | - | - | - | 2.90 | 2.90 |
| SEH 28/24 | 2.40 | 2.50 | - | - | - | - | - | - | - | 3.40 | 3.40 |
| SEH 30/24 | 2.40 | 2.50 | - | - | - | - | - | - | - | 3.40 | 3.40 |

Basic equipment Sirius: Basic operation spraying boom: hydraulic pendulum lock, hydraulic height adjustment via separate spool valve, pre-setting of function via operation terminal, operation via tractor hydraulics; digital pressure indication; integrated baffle; quick coupling system QuickConnect (900/1300: Cat. 2, 1600/1900: Cat. 3N=L2 Z3); Piston diaphragm pump 200 litres/min capacity; PTO shaft; clean water tank 160 litres; water canister 20 litres; self-cleaning pressure filter; external filling connection GEKA coupling for main tank and clean water tank; filling via injector; single lever operation within the suction and pressure side; indirect level indicator; chemical inductor with canister rinsing and Proflow nozzle within the drain off; tank internal cleaning; agitator regulation

All specifications, dimensions and weights are subject to continuous technical development and are therefore not binding. The weight specifications always refer to the basic equipment. Subject to change.

LEMKEN GmbH & Co. KG
Weseler Straße 5
46519 Alpen
Telefon +49 2802 81 0
Telefax +49 2802 81 220
lemken@lemken.com
www.LEMKEN.com



Basic equipment Sirius 8: LEMKEN Easyspray as electronic operation unit for 5 - 9 width sections with toggle switches; width section device with pressure balancing device and pressure release pipe

Basic equipment Sirius 10: LEMKEN Ecospray as electronic operation unit with fully automatic control for 5 - 9 width sections with switches; width section device with pressure release pipe

Basic equipment HE boom: asymmetrical folding, single nozzle holders; circulation up to the valves of the width sections at the central unit

Basic equipment SEH boom: symmetrical folding, electrical individual nozzle valves joined to width sections (EltecBase); circulation pipe; triple nozzle holders

Your LEMKEN dealer:



H-7522 Kaposújlak, 095/3 hrsz.
Tel: +36-82/713-274, +36-30/336-9804
E-mail: bedenek@kapos-net.hu
WEB: www.bedenek.hu